

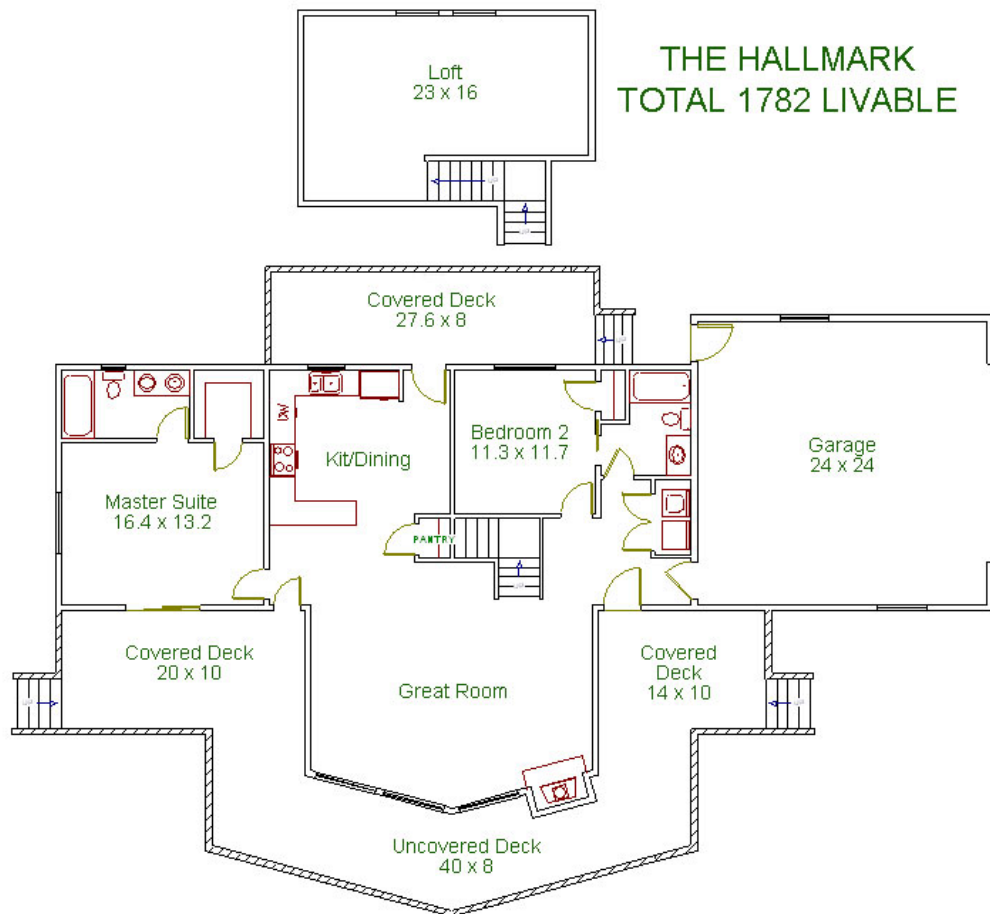


THE HALLMARK LOT 191

TAMARRON PINES

\$399,500

2X6 CONSTRUCTION, LOG SIDING, 880 SQ. FT. OF DECKS WITH COMPOSITE DECKING AND LOG RAILINGS, TONGUE AND GROOVE CEILINGS IN GREAT ROOM 30 YEAR SHINGLED ROOF, R-19 & R 30 INSULATION, SPLIT FACE BLOCK FOUNDATION, 92% ENERGY EFFICIENT LP GAS FORCED AIR FURNACE, AIR CONDITIONING, KNOTTY HICKORY CABINETS, PINE DOORS AND TRIM, LAMINATE FLOORS IN GREAT ROOM, KITCHEN AND HALL, STONE FIREPLACE, MARBLE VANITY'S, MARBLE SHOWER IN MASTER BATH, CERAMIC FLOORS IN BATHS AND LAUNDRY, UPGRADED CARPET IN BEDROOMS, DUAL PANE WINDOWS WITH LOW-E GLASS, GLASS DOORS ON SHOWER



THE HALLMARK

TOTAL 1782 LIVEABLE



ELK RIDGE BUILDERS INC. rshero@hughes.net

(928) 477-3201

RICK SHERO PRES.